

Troubleshooting for Installing TexMix in R environment

a) Error message related to Rtools

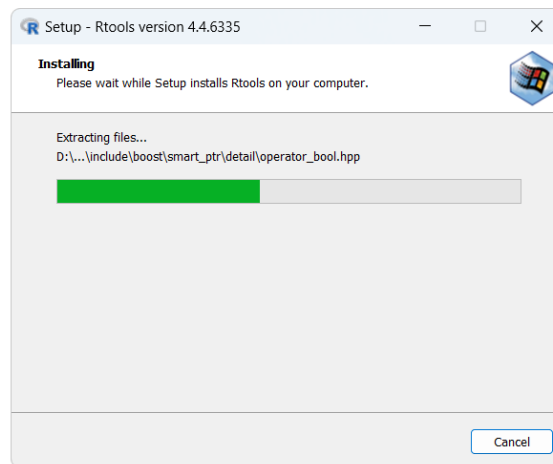
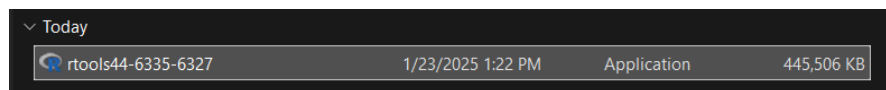
If you encounter an error message indicating the absence of Rtools, it means that Rtools needs to be installed on your system. To resolve this, download the Rtools installer from the following link: <https://cran.r-project.org/bin/windows/Rtools/>

```
WARNING: Rtools is required to build R packages but is not currently installed. Please
download and install the appropriate version of Rtools before proceeding:

https://cran.rstudio.com/bin/windows/Rtools/
Installing package into 'C:/Users/yy00021/AppData/Local/R/win-library/4.4'
(as 'lib' is unspecified)
ERROR: dependency 'maptools' is not available for package 'TexMix'
* removing 'C:/Users/yy00021/AppData/Local/R/win-library/4.4/TexMix'
Warning in install.packages :
  installation of package 'C:/Users/yy00021/Downloads/TexMix_0.5.3.tar.gz' had non-zero
exit status
> |
```

b) Install Rtools

Download and Install Rtools on your computer.



c) Check if make is in your Path.

To check if make is in your system's Path variable, open the Command Prompt (cmd) and run the following command:

```
make -version
```

If you receive a message indicating that 'make' is not recognized as an internal or external command, it means make is not included in your system's Path variable. You will need to add Rtools to your system's Path.

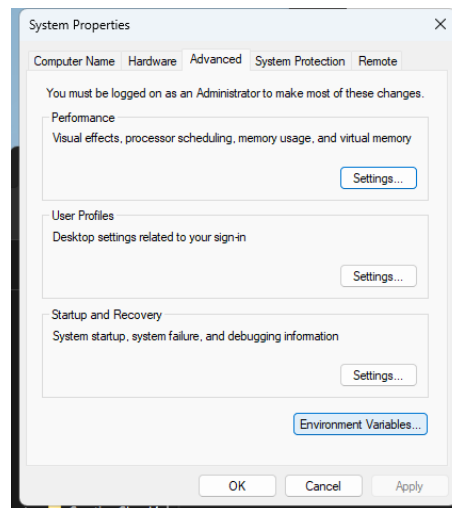
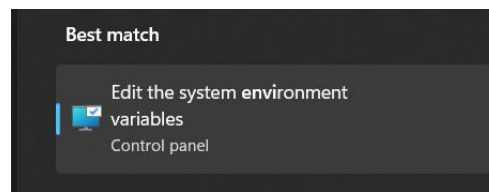
```
Command Prompt
Microsoft Windows [Version 10.0.22631.4602]
(c) Microsoft Corporation. All rights reserved.

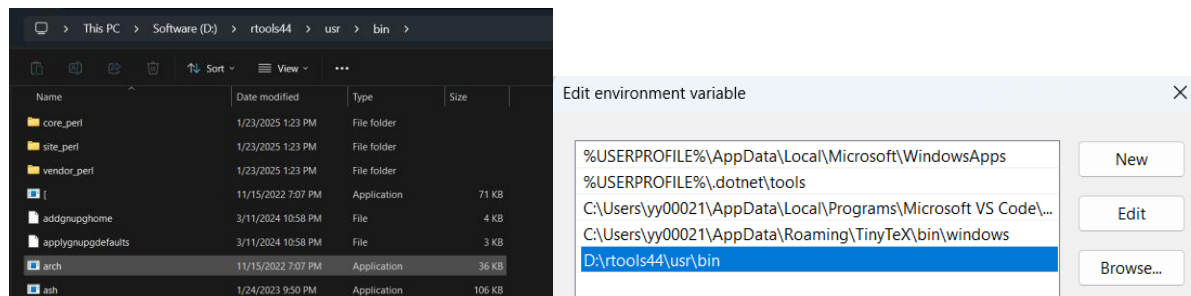
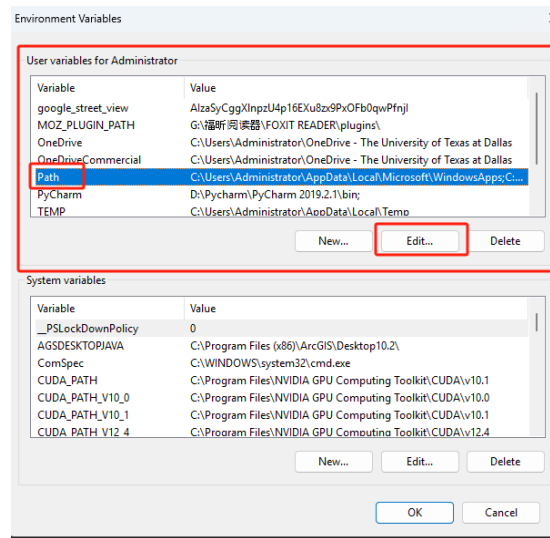
C:\Users\yy00021>make --version
'make' is not recognized as an internal or external command,
operable program or batch file.

C:\Users\yy00021>|
```

- d) Open *Edit the system environment variables – Environment Variables*, edit Path in your user variables. Click New to add 'D:\rtools\usr\bin' to your Path variable.

Note: The path D:\Rtools\usr\bin depends on the location where you installed Rtools (e.g., it may be in your C: drive)





- e) After adding Rtools to your Path, run the following commands in the Command Prompt to confirm that make is now recognized by the system:

make --version

```
C:\Users\yy00021>make --version
GNU Make 4.4.1
Built for x86_64-pc-msys
Copyright (C) 1988-2023 Free Software Foundation, Inc.
License GPLv3+: GNU GPL version 3 or later <https://gnu.org/licenses/gpl.html>
This is free software: you are free to change and redistribute it.
There is NO WARRANTY, to the extent permitted by law.

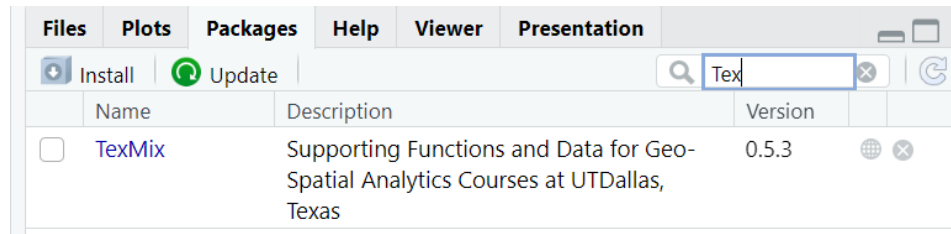
C:\Users\yy00021>where make
D:\rtools44\usr\bin\make.exe

C:\Users\yy00021>
```

- f) Get *maptools_1.1-8.tar.gz* from this link: <https://cran.r-project.org/src/contrib/Archive/maptools/> and install it in R.



g) Get *TexMix_0.5.3.tar.gz* from this link: <https://cran.r-project.org/src/contrib/Archive/TexMix/> and install in R.



Thank you to my student, Annan Shrestha, for his contribution to this troubleshooting 😊